

SPECIFICATION	
LENGTH O/A	9000 mm
LENGTH LWL	8460 mm
BEAM O/A	6850 mm
BEAM FOLDED	2460 mm
HEAD ROOM	1830 mm AT GALLEY
DRAFT BOARD UP	400 mm
DRAFT BOARD DOWN	1350 mm
WEIGHT (BARE, EMPTY)	1200 kg APPROX
MAINSAIL	32.7 sq metres
NUMBER 1 HEADSAIL	21 sq metres
NUMBER 2 HEADSAIL	15 sq metres
AUXILLIARY POWER	6-9hp OUTBOARD MOTOR (LONG SHAFT)
PLYWOOD CONSTRUCTION	

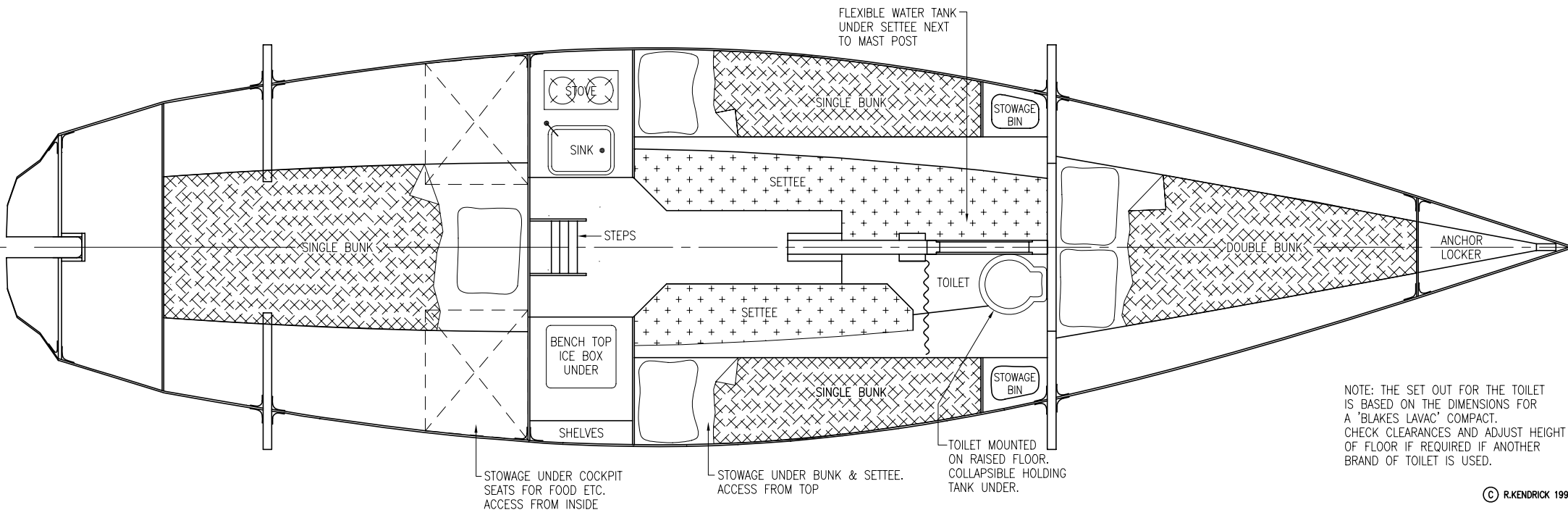
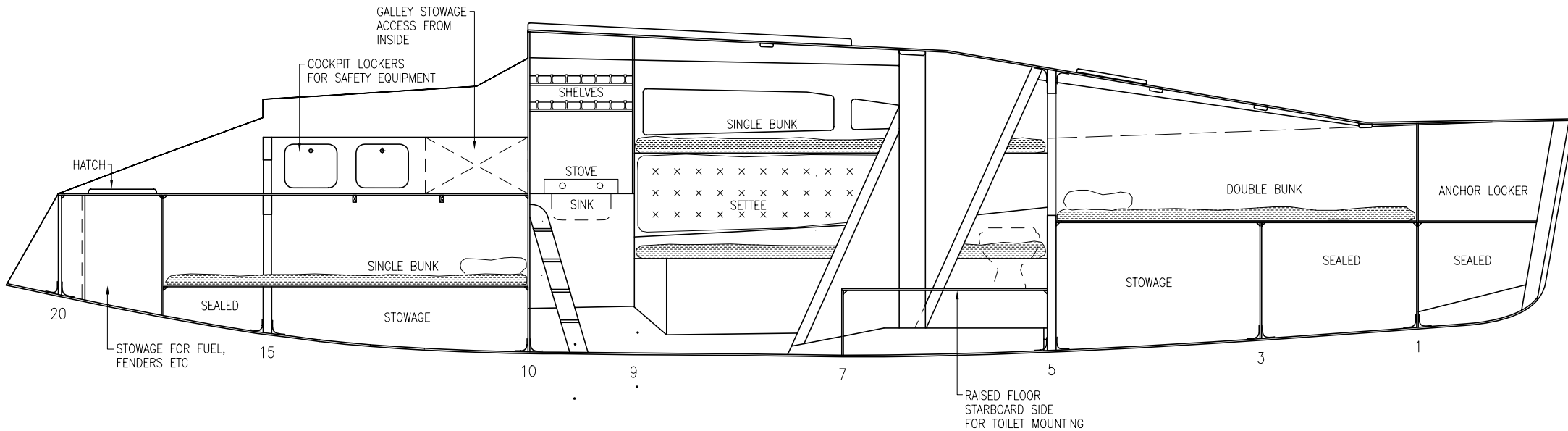
AVALON 9.0 TRIMARAN
DESIGNED BY RAY KENDRICK
GENERAL ARRANGEMENT

KENDRICK
DESIGN
M/S 279 GUNALDA QLD. 4570 PHONE/FAX 0741 292535

© R.KENDRICK 1998

DATE: DEC 98
SCALE: 1:50

DRAWING NUMBER
900P-SP1



NOTE: THE SET OUT FOR THE TOILET IS BASED ON THE DIMENSIONS FOR A 'BLAKES LAVAC' COMPACT. CHECK CLEARANCES AND ADJUST HEIGHT OF FLOOR IF REQUIRED IF ANOTHER BRAND OF TOILET IS USED.

© R.KENDRICK 1998

AVALON 9.0 TRIMARAN
DESIGNED BY RAY KENDRICK
ACCOMMODATION

KENDRICK
DESIGN
M/S 279 GUNALDA QLD. 4570 PHONE/FAX 0741 292535

DATE: DEC 98
SCALE: 1:25
DRAWING NUMBER: 900P-SP3